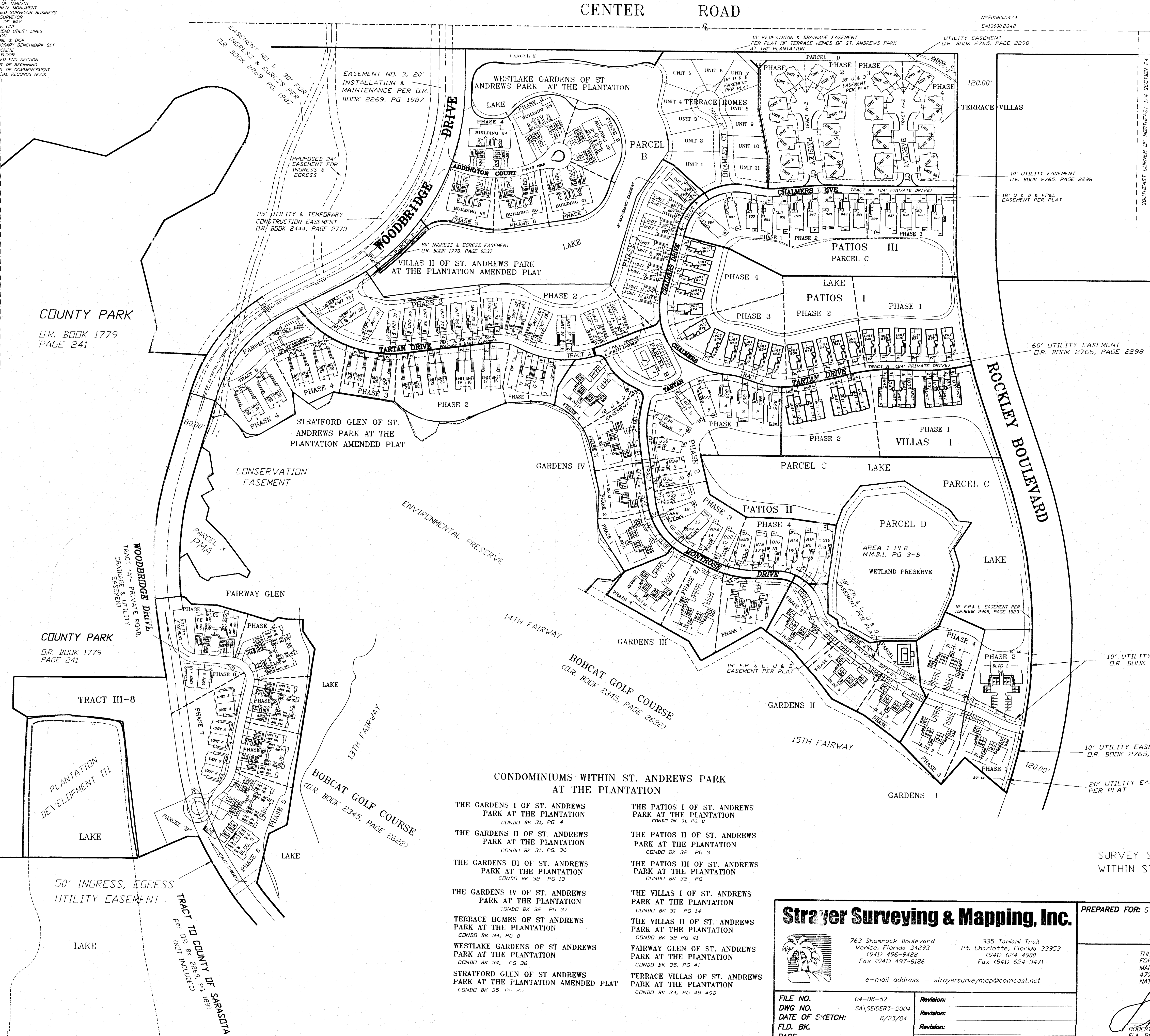


SCALE 1" = 150'

- LEGEND**
- 5/8" IRON ROD FOUND (NO CAP)
  - CONCRETE MONUMENT FOUND
  - IRON PIPE FOUND (SIZE NOTED)
  - CAPPED IRON ROD FOUND (IF NOTED)
  - CAPPED IRON ROD SET L.B. #5639
  - CONCRETE MONUMENT
  - NAI & DISK (IF NOTED)
  - NAI FOUND
  - SET NAIL
  - FLAT DIMENSION
  - MEASURED DIMENSION
  - DESCRIPTION DIMENSION
  - U & D = UTILITY & DRAINAGE
  - W.M. = WATER METER
  - GAR. = GARAGE
  - EXISTING ELEVATIONS
  - UTILITY POLE
  - P.R.M. = PERMANENT REFERENCE MONUMENT
  - P.I. = POINT OF INTERSECTION
  - P.C.P. = PERMANENT PLAT CONTROL POINT
  - P.E. = POINT OF CURVE
  - P.L. = POINT OF TANGENCY
  - L.B. = LICENSED SURVEYOR BUSINESS
  - L.S. = LAND SURVEYOR
  - P.W. = RIGHT-OF-WAY
  - C.L. = CENTER LINE
  - U.T.L. = UNDERGROUND UTILITY LINES
  - N & D = NAIL & DISK
  - T.B.M. = TEMPORARY BENCHMARK SET
  - C.C. = CONCRETE
  - FT. = FINISH FLOOR
  - M.E.S. = MITED END SECTION
  - P.O.B. = POINT OF BEGINNING
  - P.O.C. = POINT OF COMMENCEMENT
  - D.R.B. = OFFICIAL RECORDS BOOK
  - P.C. = PAGE



CONDOMINIUMS WITHIN ST. ANDREWS PARK AT THE PLANTATION

- THE GARDENS I OF ST. ANDREWS PARK AT THE PLANTATION  
CONDO BK 31, PG. 4
- THE GARDENS II OF ST. ANDREWS PARK AT THE PLANTATION  
CONDO BK 31, PG. 3
- THE GARDENS III OF ST. ANDREWS PARK AT THE PLANTATION  
CONDO BK 32, PG. 13
- THE GARDENS IV OF ST. ANDREWS PARK AT THE PLANTATION  
CONDO BK 32, PG. 37
- TERRACE HOMES OF ST. ANDREWS PARK AT THE PLANTATION  
CONDO BK 34, PG. 8
- WESTLAKE GARDENS OF ST. ANDREWS PARK AT THE PLANTATION  
CONDO BK 34, PG. 36
- STRATFORD GLEN OF ST. ANDREWS PARK AT THE PLANTATION AMENDED PLAT  
CONDO BK 35, PG. 25
- THE PATIOS I OF ST. ANDREWS PARK AT THE PLANTATION  
CONDO BK 31, PG. 9
- THE PATIOS II OF ST. ANDREWS PARK AT THE PLANTATION  
CONDO BK 32, PG. 3
- THE PATIOS III OF ST. ANDREWS PARK AT THE PLANTATION  
CONDO BK 32, PG. 6
- THE VILLAS I OF ST. ANDREWS PARK AT THE PLANTATION  
CONDO BK 31, PG. 14
- THE VILLAS II OF ST. ANDREWS PARK AT THE PLANTATION  
CONDO BK 32, PG. 41
- FAIRWAY GLEN OF ST. ANDREWS PARK AT THE PLANTATION  
CONDO BK 35, PG. 41
- TERRACE VILLAS OF ST. ANDREWS PARK AT THE PLANTATION  
CONDO BK 34, PG. 49-49D

Strayer Surveying & Mapping, Inc.

763 Shamrock Boulevard  
Venice, Florida 34293  
(941) 496-3480  
Fax (941) 497-6186

335 Tanloni Trail  
Pt. Charlotte, Florida 33953  
(941) 624-4900  
Fax (941) 624-3471

e-mail address - strayersurveying@comcast.net

FILE NO.	04-06-52	Revision:
DWG NO.	SA/SEIDER3-2004	Revision:
DATE OF SKETCH:	6/23/04	Revision:
F.L.D. BK.		Revision:
PAGE		Revision:
CHECKED BY:	R.B.S.	Revision:
DRAWN BY:	R.G.D.	Revision:

SURVEY SKETCH SHOWING THE RESPECTIVE CONDOMINIUMS WITHIN ST. ANDREWS PARK AT THE PLANTATION

PREPARED FOR: ST. ANDREWS PARK

THIS SURVEY WAS PREPARED IN ACCORDANCE WITH THE "MINIMUM TECHNICAL STANDARDS FOR SURVEYS" SET FORTH BY THE FLORIDA BOARD OF PROFESSIONAL SURVEYORS & MAPPERS IN CHAPTER 61G17-6, FLORIDA ADMINISTRATIVE CODE, PURSUANT TO SECTION 472.027, FLORIDA STATUTES, AND IS NOT INTENDED TO MEET ANY OTHER MUNICIPAL OR NATIONAL STANDARD OR REQUIREMENT UNLESS NOTED.

STRAYER SURVEYING & MAPPING, INC.  
ROBERT B. STRAYER, JR.  
FLA. PROFESSIONAL SURVEYOR & MAPPER REG. NO. #5027

"NOT VALID WITHOUT THE SIGNATURE AND THE ORIGINAL RAISED SEAL OF A FLORIDA LICENSED SURVEYOR AND MAPPER."

**SURVEYOR'S NOTES:**  
DESCRIPTION FURNISHED BY CLIENT  
SUBJECT TO EASEMENTS AND RESTRICTION OF RECORD IF ANY.